

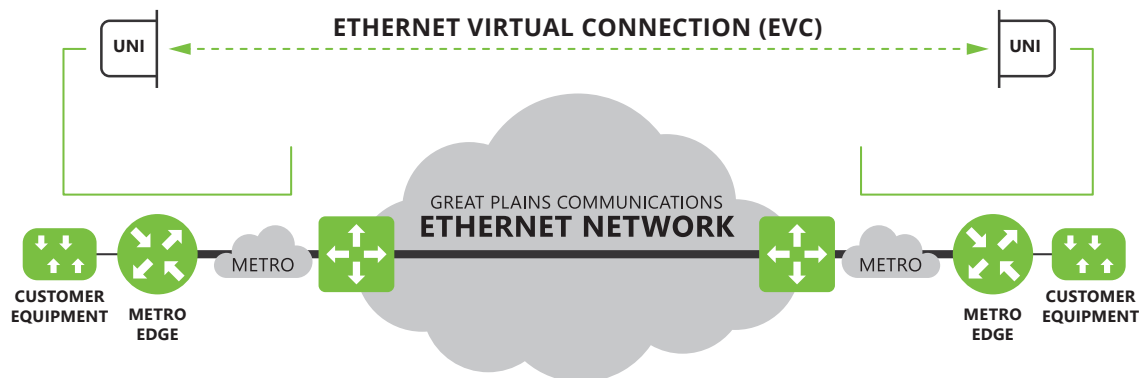
GPC

MANAGED ETHERNET PRODUCTS

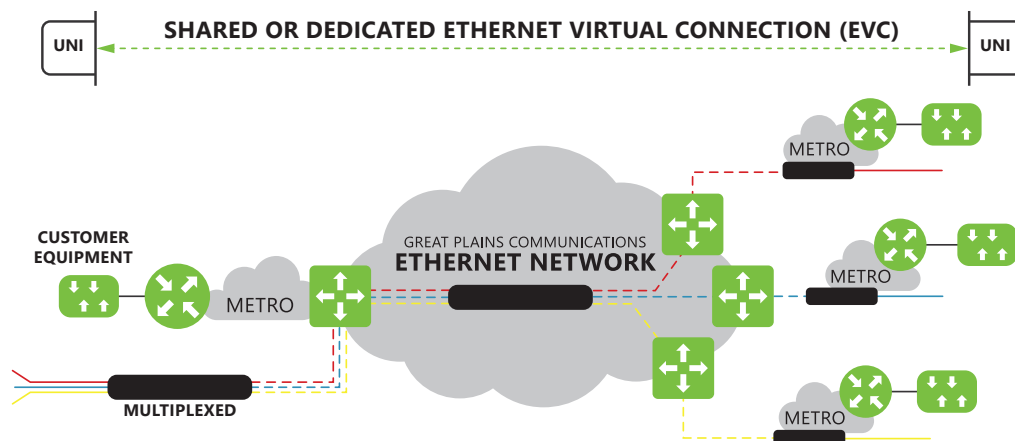
WHAT IS E-LINE?

Ethernet Line (E-Line) is a platform-agnostic, layer 2 point-to-point or point-to-multipoint service that can traverse between any two or more customer locations located in the Midwest. GPC E-Line service is protected within the core and can be ordered as Ethernet Private Line or Ethernet Virtual Private Line.

Ethernet Private Line (EPL) - This service type is a point-to-point *port-based* service that is intended to be highly transparent in the sense that service frames sent are delivered with as few modifications as possible. Traffic within these frames is managed by the customer.

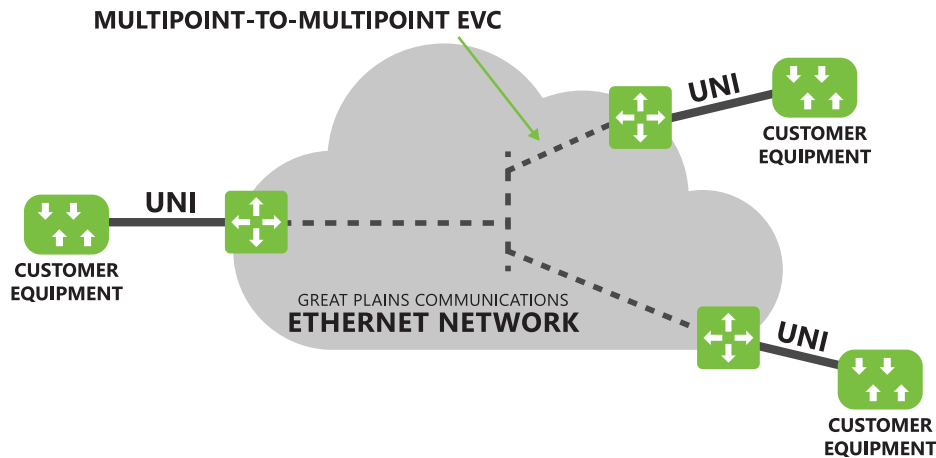


Ethernet Virtual Private Line (EVPL) - This service type is a point-to-point or point-to-multipoint Virtual Local Area Network (VLAN)-based service where Great Plains Communications (GPC) manages the VLANs for the customer.



WHAT IS E-LAN?

Ethernet Local Area Network (E-LAN) is a platform-agnostic, layer 2 multipoint-to-multipoint service that connects a number of customer locations via two or more User Network Interfaces (UNIs) providing full mesh connectivity for customer locations located in the Midwest. Each UNI can communicate with any other UNI that is connected to the Ethernet service. GPC supports EP-LAN and EVP-LAN configurations.



BENEFITS & FEATURES

- » Provides access to over 29 data centers and carrier hotels in Omaha, Denver, Kansas City, Minneapolis, Des Moines, Chicago, Indianapolis and more across the Midwest
- » Helps control the cost of connecting multiple sites with point-to-point, point-to-multipoint or multipoint-to-multipoint configurations
- » Supports speeds up to 100 Gbps with predictable, low-latency transport
- » Operates on GPC's MEF-certified fiber network
- » Includes a Service Level Agreement (SLA) supported 24x7x365 by the Network Operations Center (NOC) in Blair, Nebraska