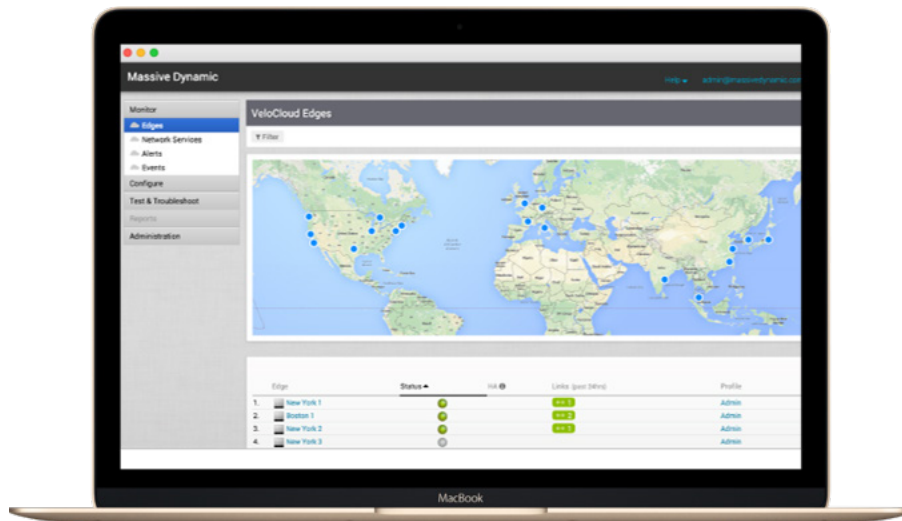


GPC **SD-WAN**

Software-Defined Wide Area Network Service powered by VMware®

Get control of your network with a fully managed SD-WAN service from Great Plains Communications.

Great Plains Communications (GPC) SD-WAN is offered in partnership with VMware®, the leading solution in the software defined networking market today. GPC SD-WAN offers secure, reliable management of your wide area network from the branch office to data centers and the cloud.



Centralized Monitoring & Control

The Orchestrator centralizes configuration, monitoring and troubleshooting.

Simplified WAN Management

Point-and-click GUI visibility, from access to applications, on a single pane of glass.

Maximize Application Performance

Optimize performance of critical applications with business-policy prioritization.

Dynamic Multi-Path Optimization™ (DMPO)

DMPO enables packet steering onto the best path to improve response time and uptime.

Cloud Network Control

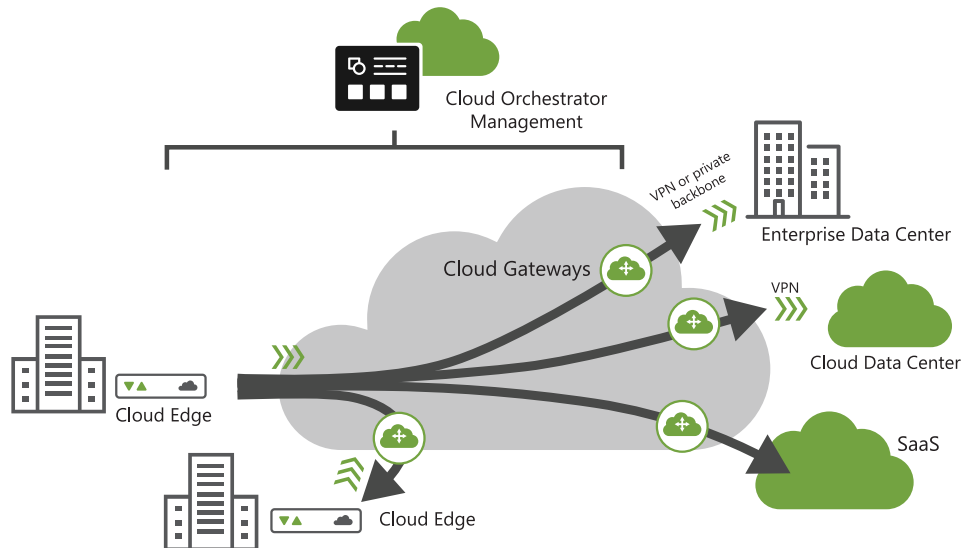
SD-WAN provides a cloud gateway network with a 99.99% SLA.

Any Access - Any Location

SD-WAN offers access over many different delivery methods, including fiber, copper, cable and wireless.

USE CASES

- » Replace complex and costly MPLS services with a faster, less expensive and fully managed SD-WAN solution.
- » Reduce unnecessary backhauling and enable direct access to SaaS applications from branch offices with cloud gateways.
- » Replace aging edge routers and VPN appliances with a managed SD-WAN Edge that combines IP routing with a fully automated Layer 2 VPN tunneling.
- » Eliminate upfront capital expenses and reduce IT management overhead with a fully managed SD-WAN service.



FEATURES & SPECIFICATIONS

Access and Scalability

- » Speeds from 10 Mbps to 10 Gbps
- » Access to over 2,000 cloud gateways in over 120 Tier-1 data centers
- » Aggregated broadband, LTE and Ethernet/MPLS circuits
- » Scalable for businesses of all sizes

QoS

- » Application-aware, per-packet sub-second link steering
- » Packet loss and jitter correction on single links
- » Business policy-based application prioritization for real-time, mission critical and interactive
- » Direct cloud/SaaS access without backhauling
- » Recognizes 3,000 applications

Management

- » Centralized and simplified network management
- » Cloud-hosted GUI-based orchestrator
- » Network visibility from access to applications

Networking and Protocols

- » BGP, BFD, OSPF, Static, IPv4/IPv6
- » Multicast - IGMP, PIM
- » DNS, DHCP, NAT
- » Up to 100,000 routes, 128 segments
- » VLAN tagging
- » MPLS CoS and DSCP tagging
- » TCP flow optimization
- » High availability configurations